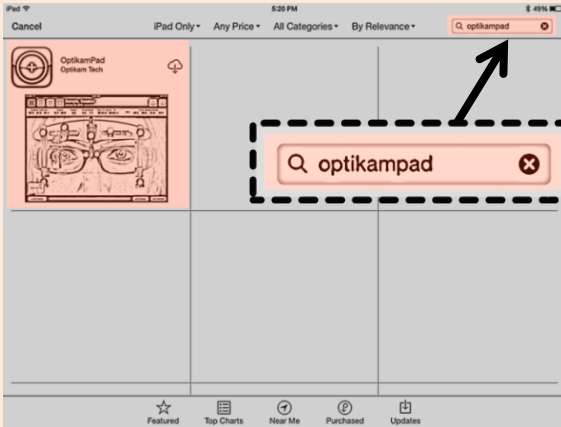


# OPTIKAMPAD GETTING STARTED GUIDE

## 1. Download and Install the OptikamPad App



Search the Apple AppStore for **OptikamPad**.

Install and open the app when installation completes.

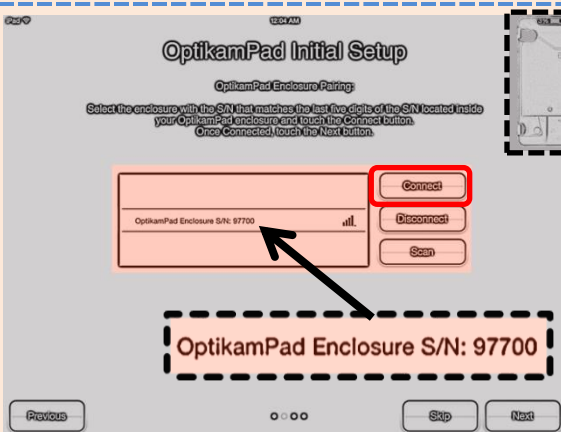
## 2. Language Selection



Proceed through the Initial Setup.

Choose the Language and tap **Next**.

## 3. Enclosure Pairing (iPad 3,4, Air and Air2)



If multiple enclosures are present, tap on the one with the S/N that matches the five digits of the S/N located inside the OptikamPad enclosure.

Tap the **Connect** button to pair the enclosure.

### 3. Enclosure Pairing (iPad 3,4, Air and Air2) continued ...



Verify that the correct enclosure is illuminated.

Tap **Next** to continue or **Skip** to proceed without enclosure pairing.

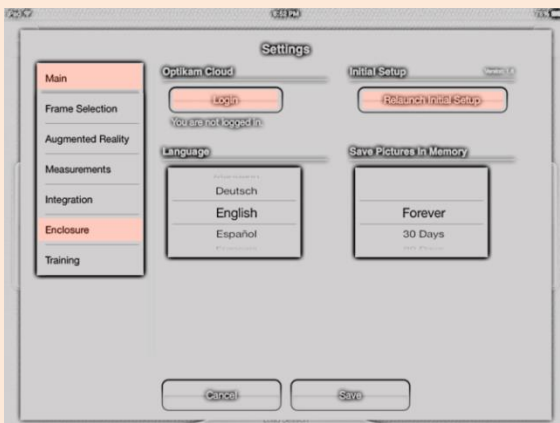
### 4. Account Login



If available, enter the login information to customize your OptikamPad experience.

Tap **Next** to continue or tap **Skip** to proceed without logging in.

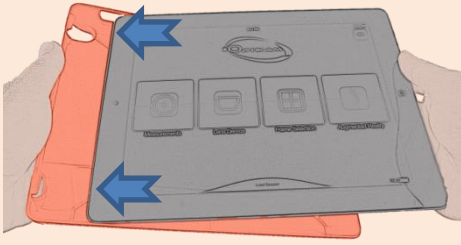
### Settings



All options can be modified at any time by accessing the Settings panel.

To access the Settings panel, tap the **Settings** button on the main screen.

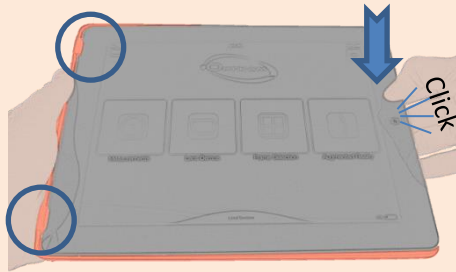
## 5. Inserting iPad into enclosure (iPad 3,4, Air and Air2)



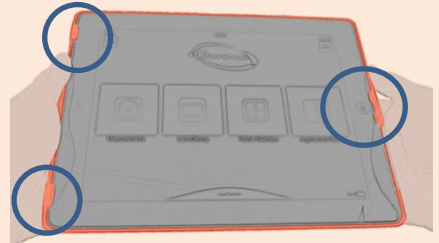
Slide the iPad into the enclosure.



Ensure that the iPad slides under the hooks located to the left of the enclosure.

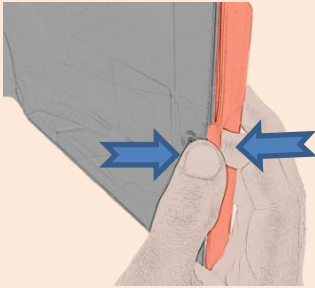


Press on the opposite end with your thumb to lock the iPad in place. A click will be heard when the iPad is locked in place.



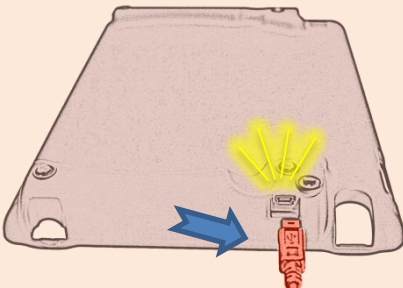
Verify that the iPad is securely held by the hooks to the left and the locking clip to the right.

## 6. Removing iPad from enclosure (iPad 3,4, Air and Air2)



Gently push the locking clip outwards with your thumb while simultaneously pushing the iPad out of the enclosure with your index finger.

## 7. Charging the enclosure (iPad 3,4, Air and Air2)



Plug the enclosure to any computer USB port or USB charger using the provided cable.

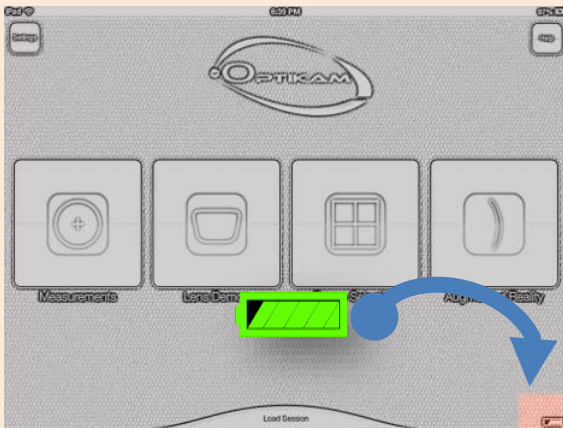
The enclosure will flash indicating charge speed:

1-High

2-Low

5-Error

## 7. Charging the enclosure (iPad 3,4, Air and Air2) continued ...



**Note:** The enclosure battery icon will not update itself unless the user taps the icon.

## 8. Battery Power (iPad 3,4, Air and Air2)

OptikamPad enclosure is equipped with a light sensor located to the side of the USB socket. To preserve battery power, when not in use, store the enclosure in a dark location such as the original box or a desk drawer.

## 9. Cleaning and Care

Wet a soft lens cleaning cloth with tap water and gently clear off any dirt and fingerprints from the back of the enclosure.

DO NOT submerge the enclosure in any liquid or use any abrasives or chemicals to clean the enclosure.

## 10. OptikamPad Help

Please visit <http://www.optikam.com/> to access more OptikamPad help content.